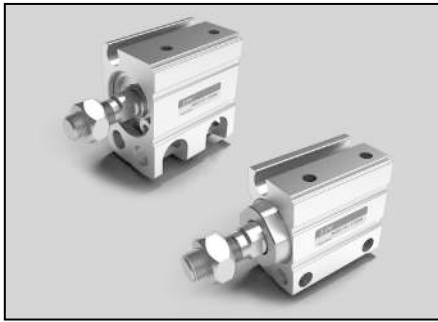


# NDC Series

Direct mount cylinder of compact type / Bore Size: Ø4, Ø6, Ø8, Ø10, Ø12, Ø16, Ø20

Actuator  
Cylinder

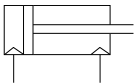
NDC Series



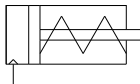
- Design of space saving type (Compared with existing products, the volume decrease reaches up to maximum 50%)
- Minimum realized stroke (4mm) (Auto switch can be equipped.)
- Attachment from four directions (front, back, left and right) is possible.

## Marking symbol

Double-acting  
single rod



single-acting  
single rod



## How to Order

**NDC D 04** — **10** **D** **M** — **W10V** **S**

1    2    3    —    4    5    6    —    7    8

1 Direct Mount Cylinder

2 Magnet

Blank : None  
D : Built-in magnet  
(Ø4 magnet is not available)

3 Bore Size

04 : 4mm  
06 : 6mm  
08 : 8mm  
10 : 10mm  
12 : 12mm  
16 : 16mm  
20 : 20mm

4 Stroke

5 Acting

D : Double-acting  
S : Single-acting & forward motion type

6 Thread

Blank : Female thread  
M : Male thread

7 Auto Switch

Blank : None  
W10V : Solid State Switch  
(10mm Vertical type)

8 Number of Switches

Blank : 2 pcs.  
S : 1 pc.

### ■ Cautions by product

Be sure to have a full understanding before use and refer to safety cautions and common cautions.

Tube internal diameter (Ø)		Stroke (mm)												
		4	5	6	8	10	15	20	25	30	35	40	45	50
04	Double-action type	●		●	●	●	●	●						
	Single-action type	●		●										
06	Double-action type	●		●	●	●	●	●	●					
	Single-action type	●		●	●									
08	Double-action type	●		●	●	●	●	●	●	●				
	Single-action type	●		●	●	●								
10	Double-action type	●		●	●	●	●	●	●	●				
	Single-action type	●		●	●	●								
12	Double-action type		●			●	●	●	●	●				
	Single-action type		●			●								
16	Double-action type		●			●	●	●	●	●				
	Single-action type		●			●								
20	Double-action type		●			●	●	●	●	●	●	●	●	●
	Single-action type		●			●								

## Standard specification

Tube internal diameter (mm)	4	6	8	10	12	16	20
Fluid in use	Air						
Operating method	Double-acting type / Single-acting type						
Guaranteed inner pressure (MPa)	1.05 (10.7 kgf/cm <sup>2</sup> )						
Minimum pressure for use (MPa)	Double-action type	0.15		0.1	0.07	0.05	
	Single-action type	0.35	0.3		0.2	0.25	0.18
Maximum pressure for use (MPa)	0.7 (7.1 kgf/cm <sup>2</sup> )						
Temperature of surroundings and fluid in use	5°C ~ 60°C						
Cushion	None			Rubber cushion			
Fueling	None						
Speed of piston in use	50~500 mm/s						
Allowable tolerance of stroke length	±0.5 0						
Installation	Penetrating hole						