

# Coils - Cnomo Type - Not For ATEX

## Technical information

<b>Type:</b>	DIN A
<b>Electrical standards:</b>	EN 60335-1 EN 60730-1
<b>Pull-in power:</b>	Approx. 1.5 x nominal (AC)
<b>Insulation class:</b>	F (155°C)
<b>Duty cycle:</b>	Continuous 100%
<b>Copper enamelled wire:</b>	Temperature class H (200°C)
<b>Bobbin materials:</b>	PA 6.6
<b>Electrical connections:</b>	3 spade connectors (6.3 x 0.8 DIN 46247)



Power	Nominal resistance [Ω]	Nominal current [mA]	Return power	Pull-in/drop-out time	Voltage	Order code
(DC Version) approx. 2 W	67	179	0.1 W	15 - 20 ms	12	76.411.00.01
	270	89			24	76.411.00.02
	1060	45			48	76.411.00.03
	4850	23			110	76.411.00.04
(AC Version) approx. 5.0 / 4.2 VA (50/60Hz)	34	208/175	1.2 VA	15 - 20 ms	24	76.411.02.12
	135	104/88			48	76.411.02.13
	780	46/38			110	76.411.02.14
	3100	23/19			230	76.411.02.15

# Plugs - Not For ATEX

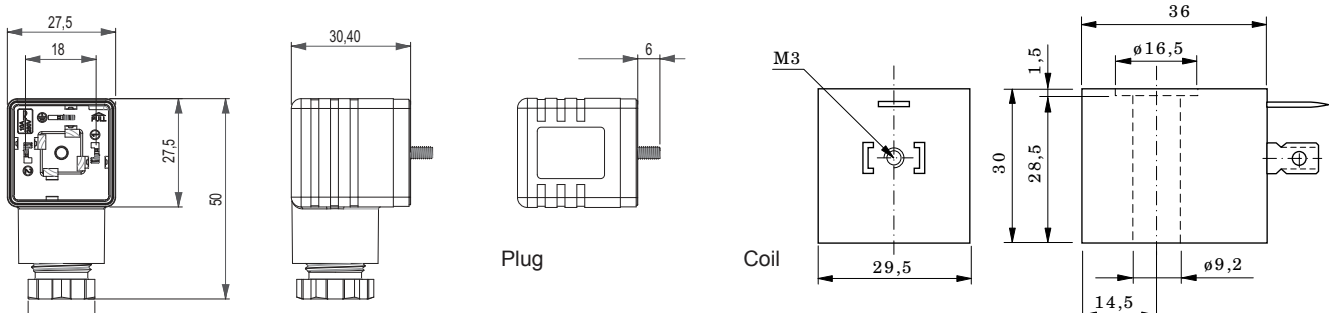
## Technical information

<b>Type:</b>	DIN 43650 type A
<b>Contact resistance:</b>	≤5 mΩ
<b>Cable screw connection:</b>	Pg 9
<b>Protection class:</b>	IP 65 with f at gasket.



Casing/colour	LED	Wire cross section	Nominal current	Nominal voltage	Ambient temperature	No. of poles	Order code
PA6 GF/black	None	max 1.5mm <sup>2</sup>	10 A	250V AC/DC	-40°C to +100°C	2+ ground (earth position H12)	PAP.00.N000
PA12/transparent	Yellow		4 A	24V AC/DC	-20°C to +80°C		PAP.00.Y024
PA12/transparent	Yellow		4 A	115V AC	-20°C to +80°C		PAP.00.Y115
PA12/transparent	Yellow		4 A	230V AC	-20°C to +80°C		PAP.00.Y230

## Dimensional drawings



# Coils - Not For ATEX

## Technical information

<b>Type:</b>	DIN B
<b>Electrical standards:</b>	EN 60335-1 EN 60730-1
<b>Pull-in power:</b>	Approx. 1.5 x nominal (AC)
<b>Insulation class:</b>	F (155°C)
<b>Duty cycle:</b>	Continuous 100%
<b>Copper enamelled wire:</b>	Temperature class H (200°C)
<b>Bobbin materials:</b>	PA 6.6
<b>Electrical connections:</b>	3 spade connectors (6.3 x 0.8 DIN 46247)



Power	Nominal resistance [Ω]	Nominal current [mA]	Return power	Pull-in/drop-out time	Voltage	Order code
(DC Version) approx. 2.5 W	56	214	0.1 W	15 - 20 ms	12	76.410.00.01
	220	109			24	76.410.00.02
	900	53			48	76.410.00.03
	4300	25.5			110	76.410.00.04
(AC Version) approx. 4.0 / 3.5 VA (50/60Hz)	56	167/146	1.5 VA	15 - 20 ms	24	76.410.02.12
	220	84/73			48	76.410.02.13
	1280	37/32			110	76.410.02.14
	4750	18/16			230	76.410.02.15

# Plugs - Not For ATEX

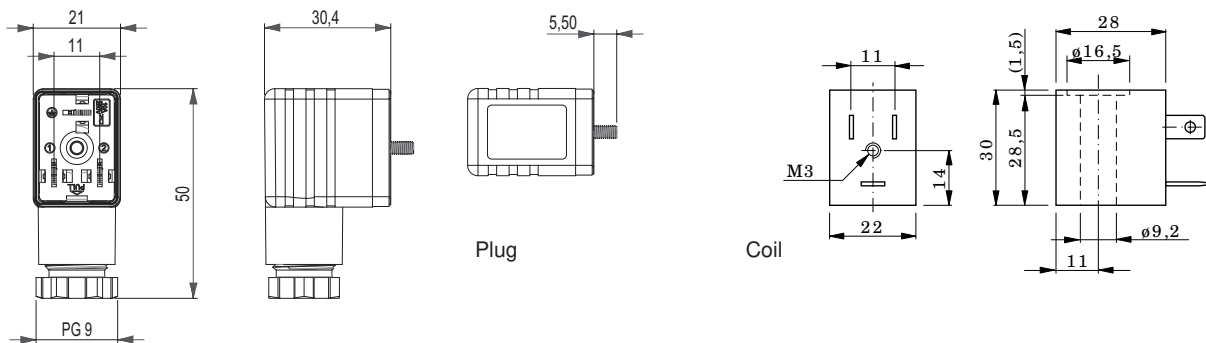
## Technical information

<b>Type:</b>	DIN 43650 type B
<b>Contact resistance:</b>	≤ 5 mΩ
<b>Cable screw connection:</b>	Pg 9
<b>Protection class:</b>	IP 65 with flat gasket.



Casing/colour	LED	Wire cross section	Nominal current	Nominal voltage	Ambient temperature	No. of poles	Order code
PA6 GF/black	None	max 1.5mm <sup>2</sup>	10 A	250V AC/DC	-40°C to +100°C	2+ ground (earth position H12)	PBP.00.N000
PA12/transparent	Yellow		4 A	24V AC/DC	-20°C to +80°C		PBP.00.Y024
PA12/transparent	Yellow		4 A	115V AC	-20°C to +80°C		PBP.00.Y115
PA12/transparent	Yellow		4 A	230V AC	-20°C to +80°C		PBP.00.Y230

## Dimensional drawings



# Manifolds & Subplates

## ISO 1 & 2 Subplates

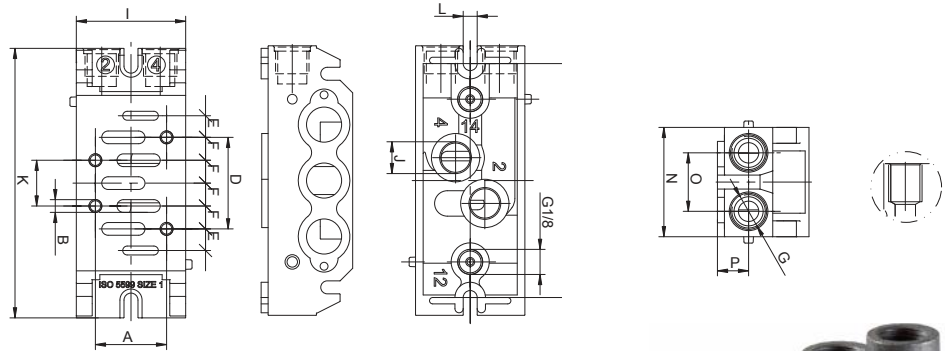
## Modular Valve Subplates - For Multiple Assemblies



Description	Order code
ISO 1 subplate includes accessories (end plates required)	<b>76.420.00.93</b>
ISO 2 subplate includes accessories (end plates required)	<b>76.420.00.14</b>

Subplates	A	B	C	D	E	F	G	H	I	J	K
ISO 1	28	M5	4.5	36	8.5	9	G 1/4	92	43	G 1/4	106
ISO 2	38	M6	7	48	10	12	G 3/8	102	56	G 3/8	120

### Dimensional drawings



### End Plates

Description	Order code
ISO 1 end plate (two required per manifold) includes accessories	<b>76.420.00.75</b>
ISO 2 end plate (two required per manifold) includes accessories	<b>76.420.00.85</b>
ISO 1 separation module/closed endplate includes accessories	<b>76.420.00.27</b>
ISO 2 separation module/closed endplate includes accessories	<b>76.420.00.28</b>



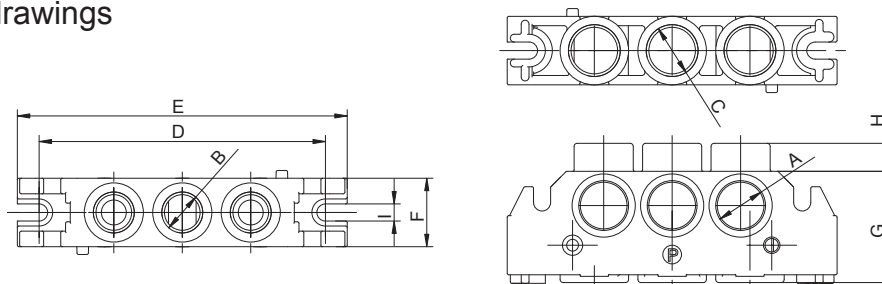
End Plates	A	B	C
ISO 1	G 3/8	G 1/4	G 3/8
ISO 2	G 1/2	G 1/4	G 1/2

Multiple connection possibilities are available, each end plate is provided with blocked threaded ports, simply break through the respective port required.

Separation Modules	A	B	C	D	E	F
ISO 1	92	106	22	36	8	5.5
ISO 2	102	120	29	43	7	6.5

Separation modules do not have threaded ports, all ports are closed, they can also be used as a closed endplate.

### Dimensional drawings



# Manifolds & Subplates

## ISO 1 & 2 Subplates

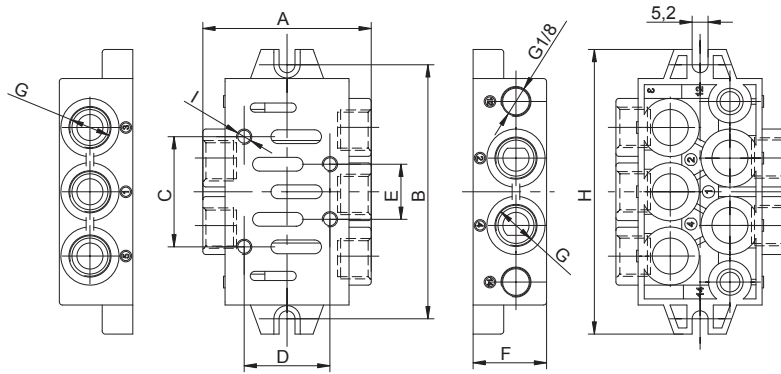
### Single Subplates - For Individual Valves



Description	Order code
ISO 1 individual subplate	76.420.00.11
ISO 2 individual subplate	76.420.00.12

Subplates	A	B	C	D	E	F	G	H
ISO 1	56	82.5	36	28	18	24	G 1/4	92.5
ISO 2	65	100.5	48	38	24	30	G 3/8	112.5

### Dimensional drawings



# ISO 1 Air Pilot Operated Pneumatic Valves

## 5/2 Way Double Pilot Control Valve

### Technical information

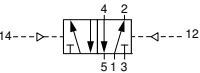
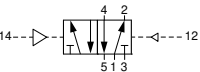
<b>Pressure range:</b>	2.5-10 bar
<b>Control pressure:</b>	2.5-10 bar
<b>Temperature range:</b>	-15°C...+50°C
<b>Housing:</b>	Die-cast and lacquered aluminium alloy
<b>Seals:</b>	NBR
<b>Lubricant:</b>	Not required.
<b>Operating medium:</b>	5 micron filtered, lubricated or non-lubricated compressed air.



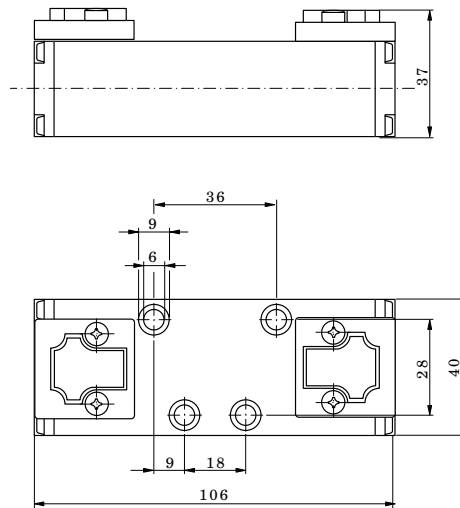
### Other information



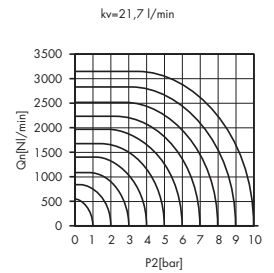
For ATEX certification use suffix code "EX" for example 76.XXX.XX.XX.EX  
Subplates are available for this product, see data sheets M1004 & M1005.

Symbol	Description	Type	Orifice	Order code
	5/2 way double pilot	Poppet	6mm	<b>76.087.71.42</b>
	5/2 way double pilot	Spool	6mm	<b>76.083.71.42</b>
	5/2 way double pilot with priority	Poppet	6mm	<b>76.087.71.47</b>
	5/2 way double pilot with priority	Spool	6mm	<b>76.083.71.47</b>

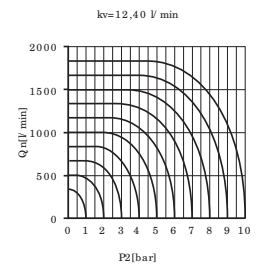
### Dimensional drawings



Flow rate orifice poppet type



Flow rate orifice spool type



# ISO 1 Air Pilot Operated Pneumatic Valves

## 5/3 Way Double Pilot Control Valve

### Technical information

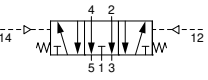
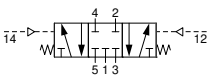
<b>Pressure range:</b>	2.5-10 bar
<b>Control pressure:</b>	2.5-10 bar
<b>Temperature range:</b>	-15°C...+50°C
<b>Housing:</b>	Die-cast and lacquered aluminium alloy
<b>Seals:</b>	NBR
<b>Lubricant:</b>	Not required.
<b>Operating medium:</b>	5 micron filtered, lubricated or non-lubricated compressed air.



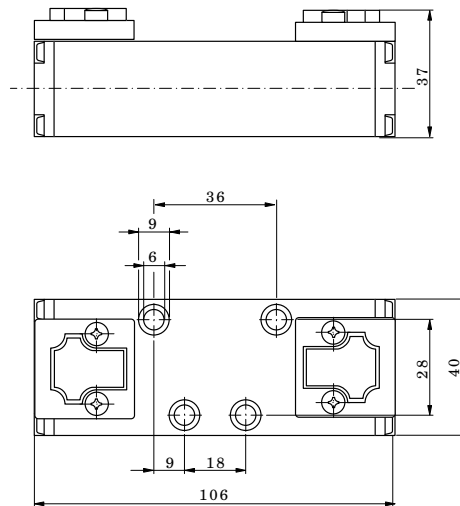
### Other information



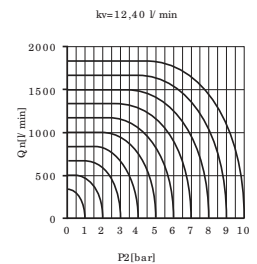
For ATEX certification use suffix code "EX" for example 76.XXX.XX.XX.EX  
 Subplates are available for this product, see data sheets M1004 & M1005.

Symbol	Description	Type	Orifice	Order code
	5/3 way spring return to centre all ports open	Spool	6mm	<b>76.084.71.28</b>
	5/3 way spring return to centre all ports closed	Spool	6mm	<b>76.084.71.38</b>

### Dimensional drawings



Flow rate orifice spool type



# ISO 1 Solenoid Operated Pneumatic Valves

## 5/2 Way Double Solenoid Control Valve

### Technical information

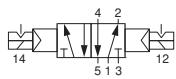
<b>Pressure range:</b>	2.5-10 bar
<b>Temperature range:</b>	-15°C...+50°C
<b>Housing:</b>	Die-cast and lacquered aluminium alloy
<b>Seals:</b>	NBR
<b>Lubricant:</b>	Not required.
<b>Earthing contact:</b>	Part of the standard device.
<b>Operating medium:</b>	5 micron filtered, lubricated or non-lubricated compressed air.



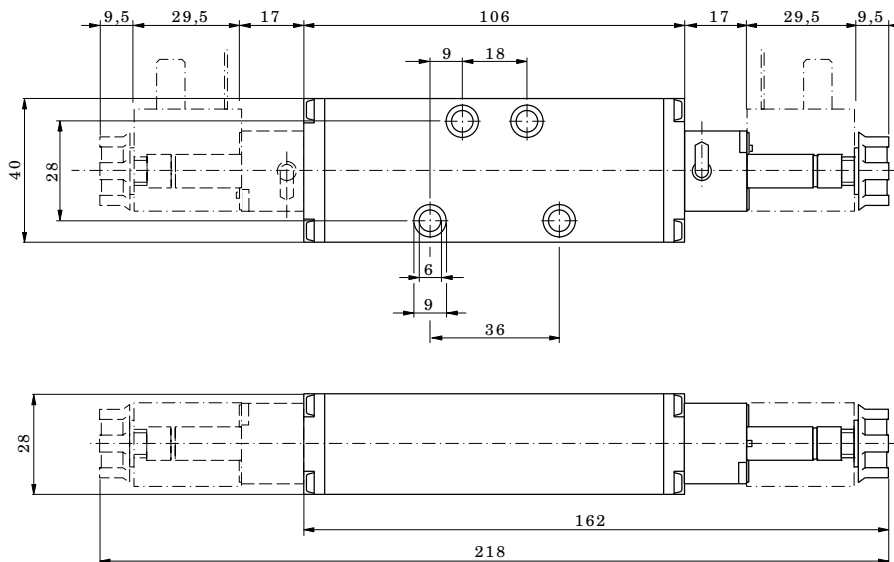
### Other information



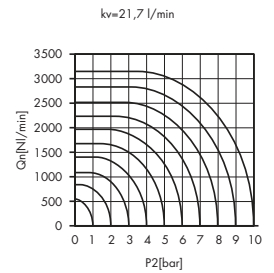
For ATEX certification use suffix code "EX" for example 76.XXX.XX.XX.EX  
 Subplates are available for this product, see data sheets M1004 & M1005.  
 Order coils & connecting plugs separately, see data sheet M1002.

Symbol	Description	Type	Orifice	Order code
	5/2 way double solenoid	Poppet	6mm	<b>76.087.92.00</b>
	5/2 way double solenoid	Spool	6mm	<b>76.083.92.00</b>

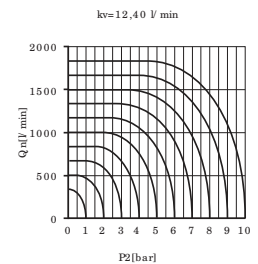
### Dimensional drawings



Flow rate orifice poppet type



Flow rate orifice spool type



# ISO 1 Solenoid Operated Pneumatic Valves

## 5/3 Way Double Solenoid Control Valve

### Technical information

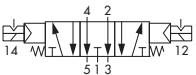
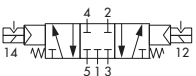
<b>Pressure range:</b>	2.5-10 bar
<b>Temperature range:</b>	-15°C...+50°C
<b>Housing:</b>	Die-cast and lacquered aluminium alloy
<b>Seals:</b>	NBR
<b>Lubricant:</b>	Not required.
<b>Earthing contact:</b>	Part of the standard device.
<b>Operating medium:</b>	5 micron filtered, lubricated or non-lubricated compressed air.



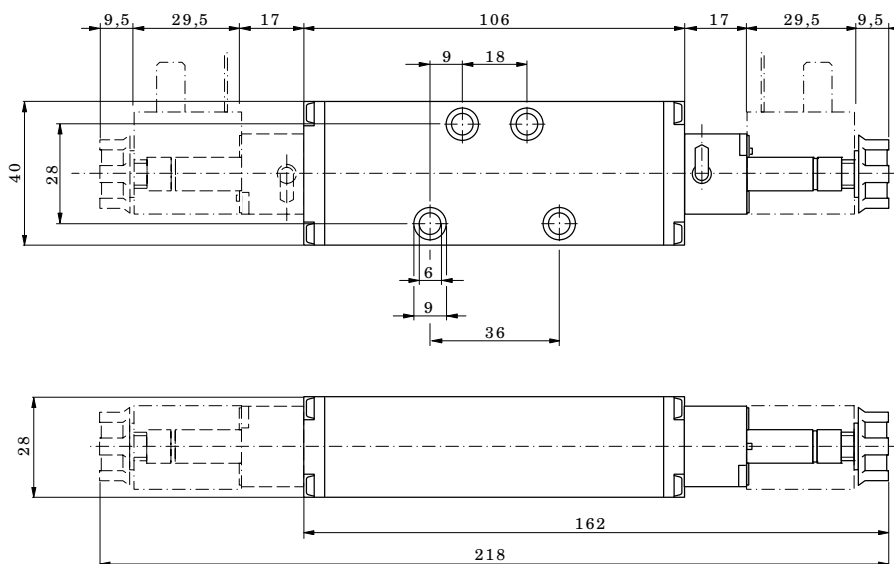
### Other information



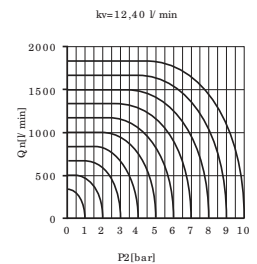
For ATEX certification use suffix code "EX" for example 76.XXX.XX.XX.EX  
Subplates are available for this product, see data sheets M1004 & M1005.  
Order coils & connecting plugs separately, see data sheet M1002.

Symbol	Description	Type	Orifice	Order code
	5/3 way spring return to centre all ports open	Spool	6mm	<b>76.084.02.00</b>
	5/3 way spring return to centre all ports closed	Spool	6mm	<b>76.084.12.00</b>

### Dimensional drawings



Flow rate orifice spool type





# ISO 1 Solenoid Operated Pneumatic Valves

## 5/2 Way Double Solenoid Control Valve

### Technical information

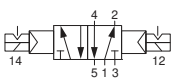
<b>Pressure range:</b>	2.5-10 bar
<b>Temperature range:</b>	-15°C...+50°C
<b>Housing:</b>	Die-cast and lacquered aluminium alloy
<b>Seals:</b>	NBR
<b>Lubricant:</b>	Not required.
<b>Earthing contact:</b>	Part of the standard device.
<b>Operating medium:</b>	5 micron filtered, lubricated or non-lubricated compressed air.



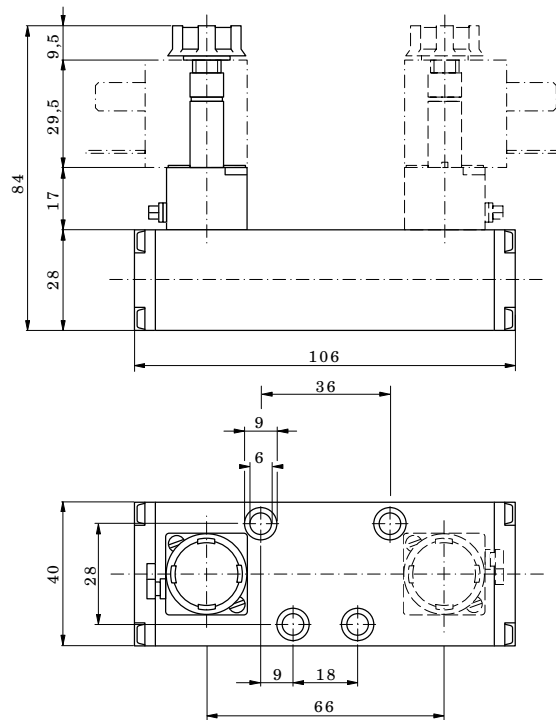
### Other information



For ATEX certification use suffix code "EX" for example 76.XXX.XX.XX.EX  
Subplates are available for this product, see data sheets M1004 & M1005.  
Order coils & connecting plugs separately, see data sheet M1002.

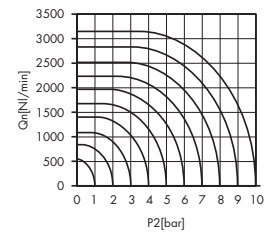
Symbol	Description	Type	Orifice	Order code
	5/2 way double solenoid	Poppet	6mm	<b>76.087.95.00</b>
	5/2 way double solenoid	Spool	6mm	<b>76.083.95.00</b>

### Dimensional drawings



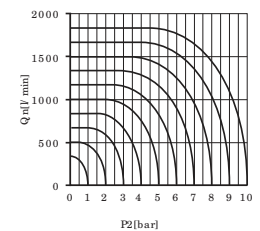
Flow rate orifice poppet type

kv=21,7 l/min



Flow rate orifice spool type

kv=12,40 l/min



# ISO 1 Solenoid Operated Pneumatic Valves

## 5/3 Way Double Solenoid Control Valve

### Technical information

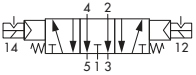
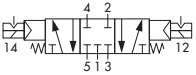
<b>Pressure range:</b>	2.5-10 bar
<b>Temperature range:</b>	-15°C...+50°C
<b>Housing:</b>	Die-cast and lacquered aluminium alloy
<b>Seals:</b>	NBR
<b>Lubricant:</b>	Not required.
<b>Earthing contact:</b>	Part of the standard device.
<b>Operating medium:</b>	5 micron filtered, lubricated or non-lubricated compressed air.



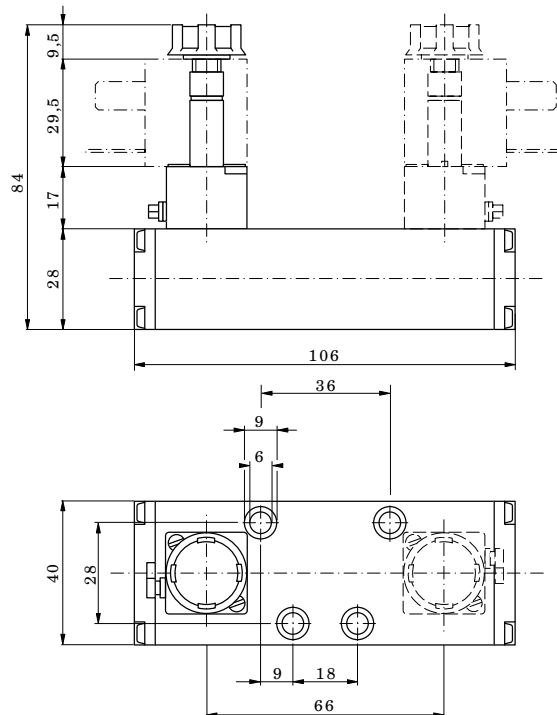
### Other information



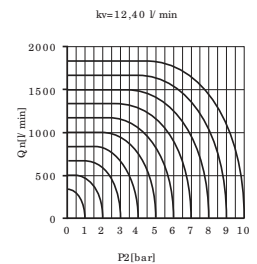
For ATEX certification use suffix code "EX" for example 76.XXX.XX.XX.EX  
 Subplates are available for this product, see data sheets M1004 & M1005.  
 Order coils & connecting plugs separately, see data sheet M1002.

Symbol	Description	Type	Orifice	Order code
	5/3 way spring return to centre all ports open	Spool	6mm	<b>76.084.05.00</b>
	5/3 way spring return to centre all ports closed	Spool	6mm	<b>76.084.15.00</b>

### Dimensional drawings



Flow rate orifice spool type



# ISO 1 Solenoid Operated Pneumatic Valves

## 5/3 Way Double Solenoid Control Valve - Cnomo Coil

### Technical information

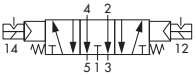
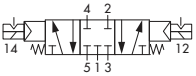
<b>Pressure range:</b>	2.5-10 bar
<b>Temperature range:</b>	-15°C...+50°C
<b>Housing:</b>	Die-cast and lacquered aluminium alloy
<b>Seals:</b>	NBR
<b>Lubricant:</b>	Not required.
<b>Earthing contact:</b>	Part of the standard device.
<b>Operating medium:</b>	5 micron filtered, lubricated or non-lubricated compressed air.



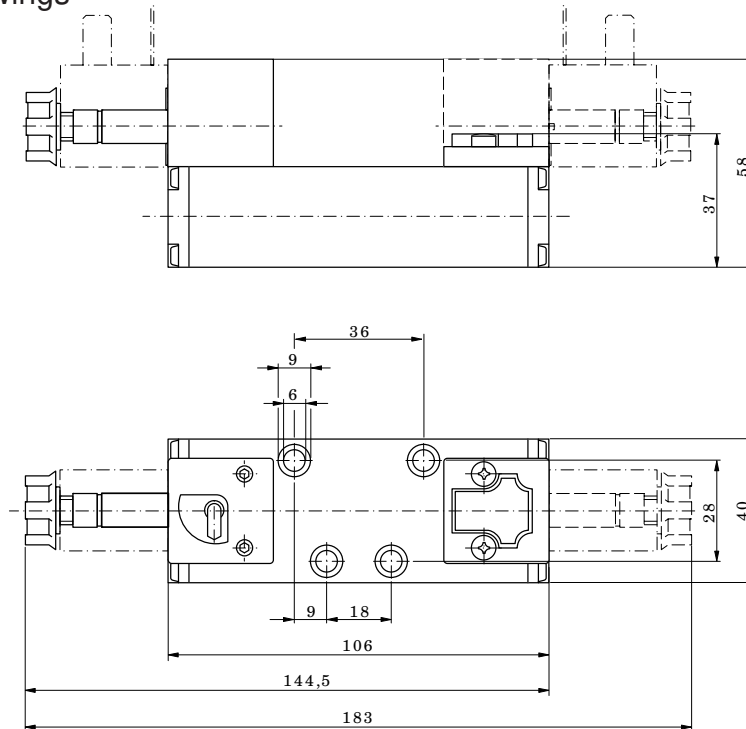
### Other information



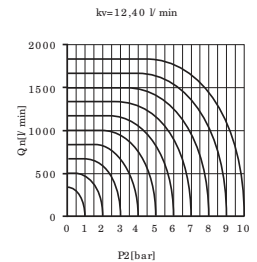
For ATEX certification use suffix code "EX" for example 76.XXX.XX.XX.EX  
Subplates are available for this product, see data sheets M1004 & M1005.  
Order coils & connecting plugs separately, see data sheet M1003.

Symbol	Description	Type	Orifice	Order code
	5/3 way spring return to centre all ports open	Spool	6mm	<b>76.084.08.00</b>
	5/3 way spring return to centre all ports closed	Spool	6mm	<b>76.084.18.00</b>

### Dimensional drawings



Flow rate orifice spool type



# ISO 1 Air Pilot Operated Pneumatic Valves

## 5/2 Way Single Pilot Control Valve

### Technical information

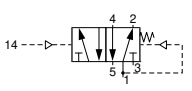
<b>Pressure range:</b>	2.5-10 bar
<b>Control pressure:</b>	2.5-10 bar (port 14 ≥ port 1 pressure)
<b>Temperature range:</b>	-15°C...+50°C
<b>Housing:</b>	Die-cast and lacquered aluminium alloy
<b>Seals:</b>	NBR
<b>Lubricant:</b>	Not required.
<b>Operating medium:</b>	5 micron filtered, lubricated or non-lubricated compressed air.



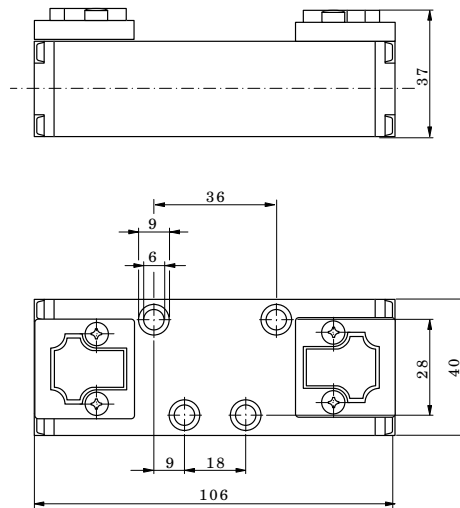
### Other information



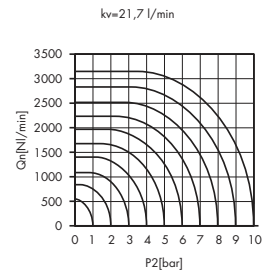
For ATEX certification use suffix code "EX" for example 76.XXX.XX.XX.EX  
Subplates are available for this product, see data sheets M1004 & M1005.

Symbol	Description	Type	Orifice	Order code
	5/2 way spring return	Poppet	6mm	<b>76.087.71.41</b>
	5/2 way spring return	Spool	6mm	<b>76.083.71.41</b>

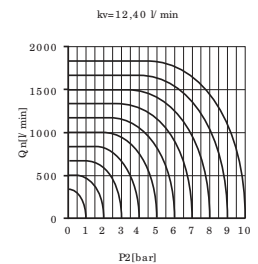
### Dimensional drawings



Flow rate orifice poppet type



Flow rate orifice spool type



# ISO 1 Solenoid Operated Pneumatic Valves

## 5/2 Way Single Solenoid Control Valve

### Technical information

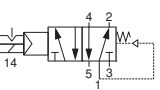
<b>Pressure range:</b>	2.5-10 bar
<b>Temperature range:</b>	-15°C...+50°C
<b>Housing:</b>	Die-cast and lacquered aluminium alloy
<b>Seals:</b>	NBR
<b>Lubricant:</b>	Not required.
<b>Earthing contact:</b>	Part of the standard device.
<b>Operating medium:</b>	5 micron filtered, lubricated or non-lubricated compressed air.



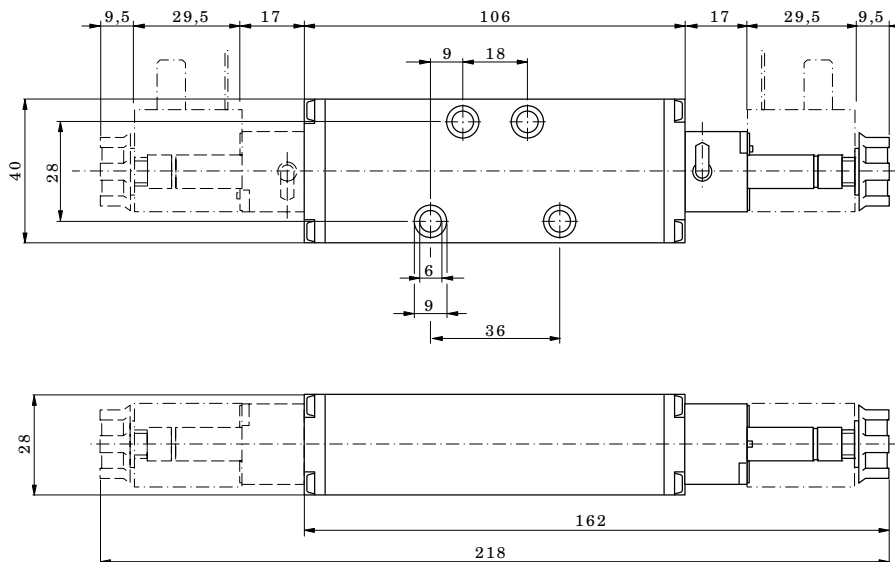
### Other information



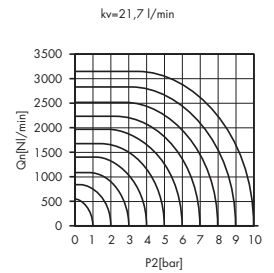
For ATEX certification use suffix code "EX" for example 76.XXX.XX.XX.EX  
Subplates are available for this product, see data sheets M1004 & M1005.  
Order coils & connecting plugs separately, see data sheet M1002.

Symbol	Description	Type	Orifice	Order code
	5/2 way spring return	Poppet	6mm	<b>76.087.91.00</b>
	5/2 way spring return	Spool	6mm	<b>76.083.91.00</b>

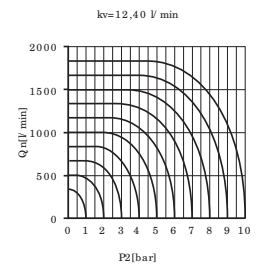
### Dimensional drawings



Flow rate orifice poppet type



Flow rate orifice spool type



# ISO 1 Solenoid Operated Pneumatic Valves

## 5/2 Way Single Solenoid Control Valve

### Technical information

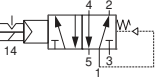
<b>Pressure range:</b>	2.5-10 bar
<b>Temperature range:</b>	-15°C...+50°C
<b>Housing:</b>	Die-cast and lacquered aluminium alloy
<b>Seals:</b>	NBR
<b>Lubricant:</b>	Not required.
<b>Earthing contact:</b>	Part of the standard device.
<b>Operating medium:</b>	5 micron filtered, lubricated or non-lubricated compressed air.



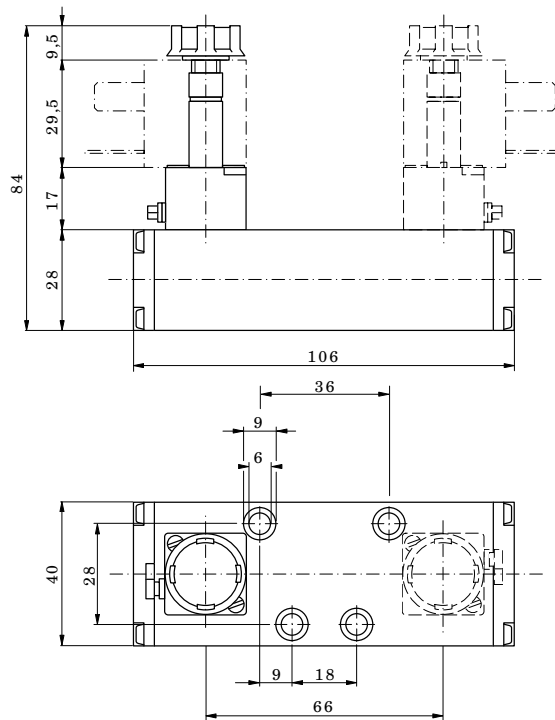
### Other information



For ATEX certification use suffix code "EX" for example 76.XXX.XX.XX.EX  
Subplates are available for this product, see data sheets M1004 & M1005.  
Order coils & connecting plugs separately, see data sheet M1002.

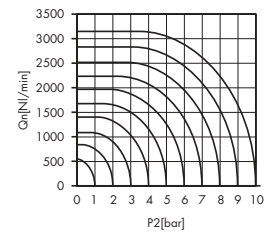
Symbol	Description	Type	Orifice	Order code
	5/2 way spring return	Poppet	6mm	<b>76.087.94.00</b>
	5/2 way spring return	Spool	6mm	<b>76.083.94.00</b>

### Dimensional drawings



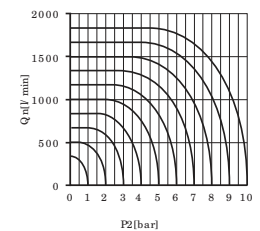
Flow rate orifice poppet type

kv=21,7 l/min



Flow rate orifice spool type

kv=12,40 l/min



# ISO 1 Solenoid Operated Pneumatic Valves

## 5/2 Way Single Solenoid Control Valve - Cnomo Coil

### Technical information

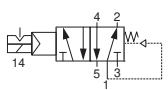
<b>Pressure range:</b>	2.5-10 bar
<b>Temperature range:</b>	-15°C...+50°C
<b>Housing:</b>	Die-cast and lacquered aluminium alloy
<b>Seals:</b>	NBR
<b>Lubricant:</b>	Not required.
<b>Earthing contact:</b>	Part of the standard device.
<b>Operating medium:</b>	5 micron filtered, lubricated or non-lubricated compressed air.



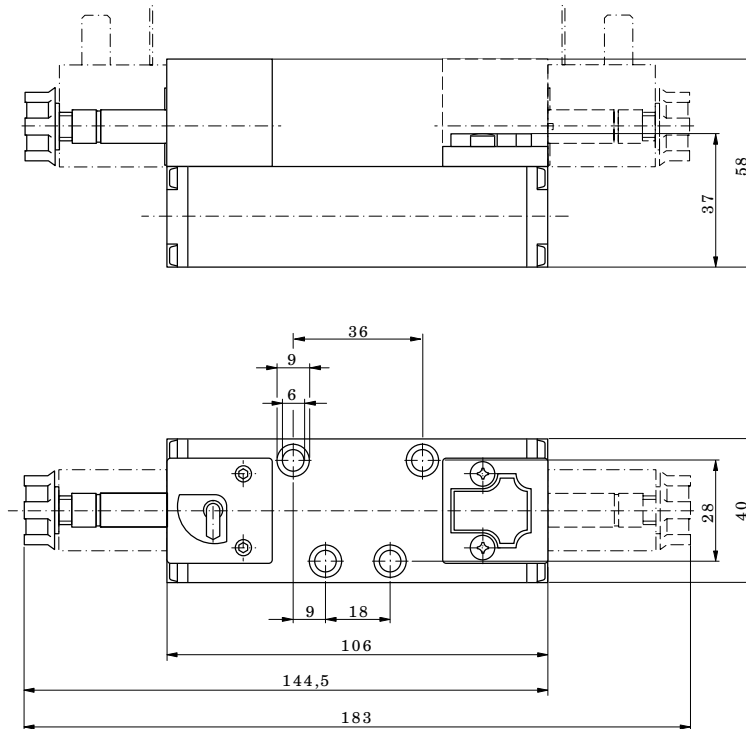
### Other information



For ATEX certification use suffix code "EX" for example 76.XXX.XX.XX.EX  
Subplates are available for this product, see data sheets M1004 & M1005.  
Order coils & connecting plugs separately, see data sheet M1003.

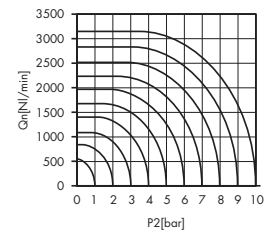
Symbol	Description	Type	Orifice	Order code
	5/2 way spring return	Poppet	6mm	<b>76.087.97.00</b>
	5/2 way spring return	Spool	6mm	<b>76.083.97.00</b>

### Dimensional drawings



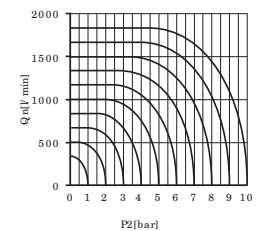
Flow rate orifice poppet type

kv=21,7 l/min



Flow rate orifice spool type

kv=12,40 l/min



# ISO 1 Solenoid Operated Pneumatic Valves

## 5/2 Way Double Solenoid Control Valve - Cnomo Coil

### Technical information


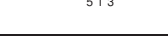
<b>Pressure range:</b>	2.5-10 bar
<b>Temperature range:</b>	-15°C...+50°C
<b>Housing:</b>	Die-cast and lacquered aluminium alloy
<b>Seals:</b>	NBR
<b>Lubricant:</b>	Not required.
<b>Earthing contact:</b>	Part of the standard device.
<b>Operating medium:</b>	5 micron filtered, lubricated or non-lubricated compressed air.



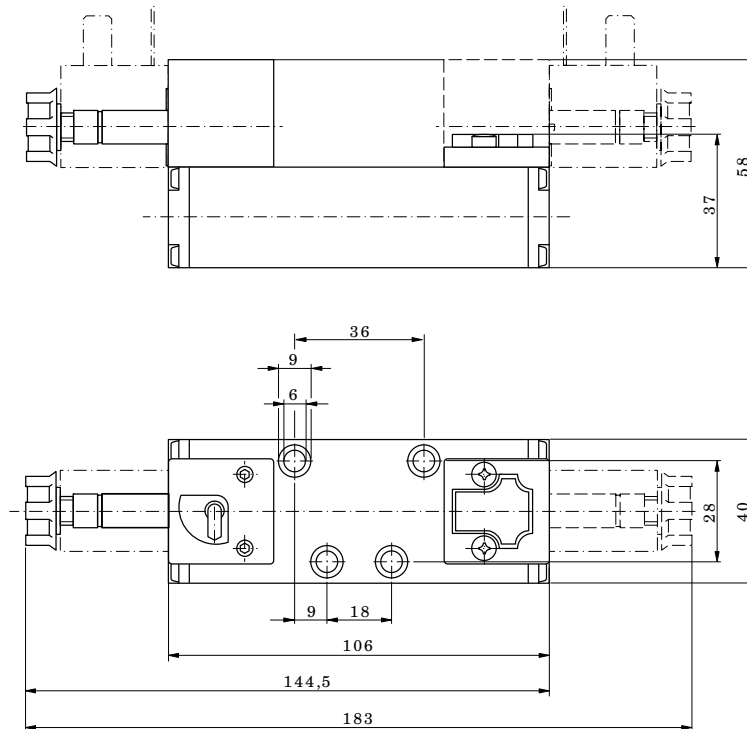
### Other information



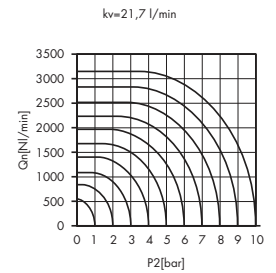
For ATEX certification use suffix code "EX" for example 76.XXX.XX.XX.EX  
 Subplates are available for this product, see data sheets M1004 & M1005.  
 Order coils & connecting plugs separately, see data sheet M1003.

Symbol	Description	Type	Orifice	Order code
	5/2 way double solenoid	Poppet	6mm	<b>76.087.98.00</b>
	5/2 way double solenoid	Spool	6mm	<b>76.083.98.00</b>

### Dimensional drawings



Flow rate orifice poppet type



Flow rate orifice spool type

